

DTC	Always ON	Malfunction in ECU VSC TRAC Warning Light Circuit
------------	------------------	--

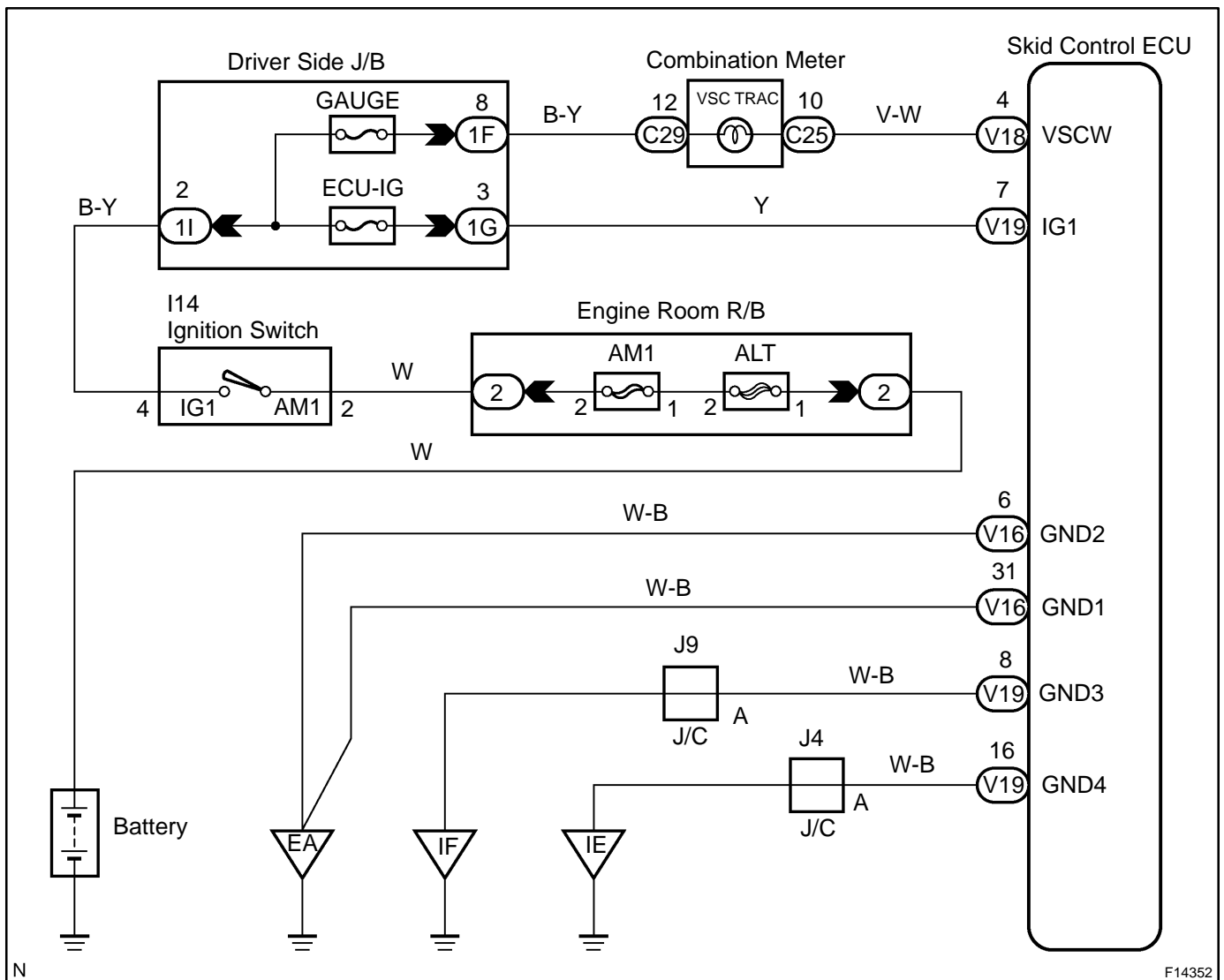
CIRCUIT DESCRIPTION

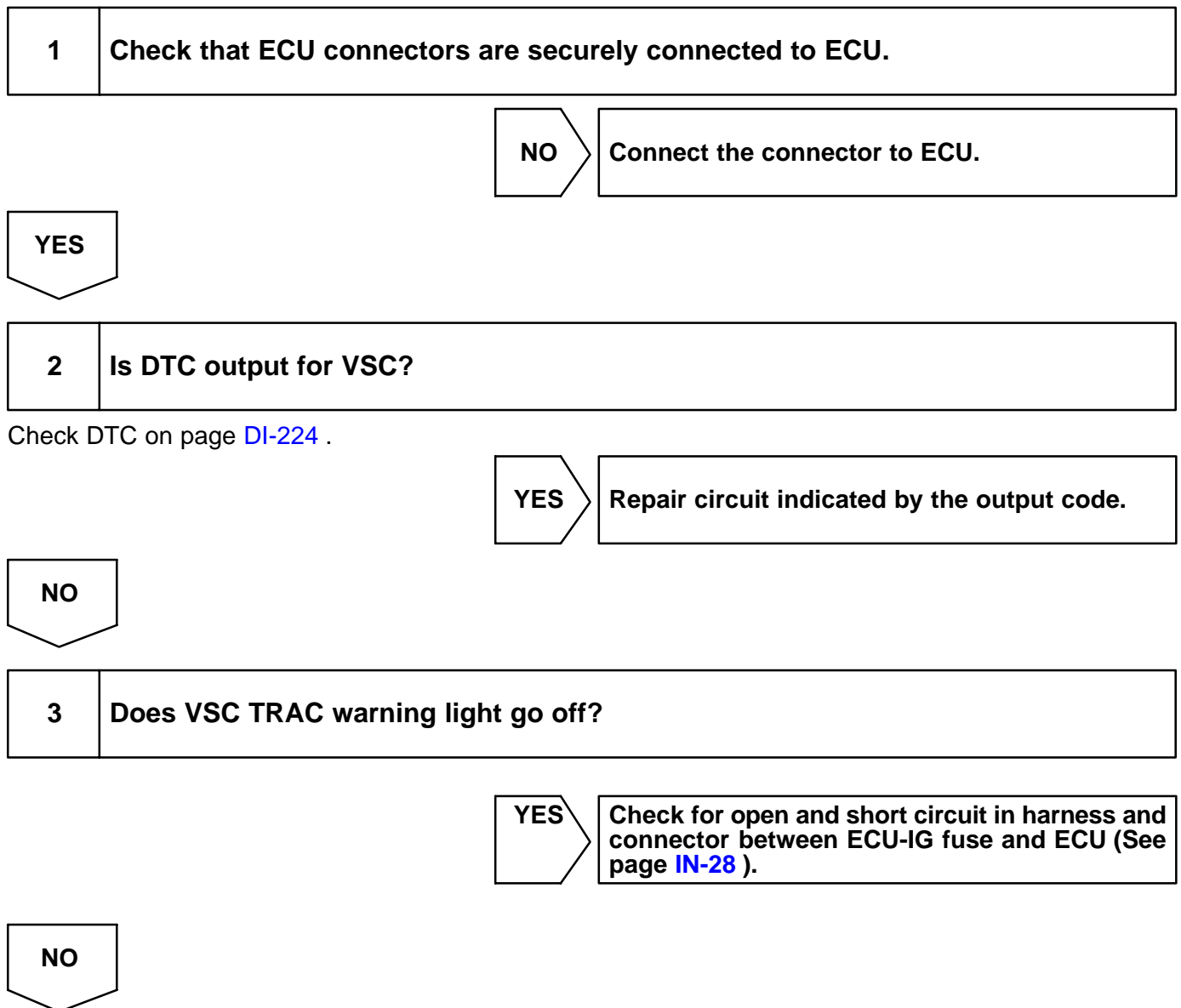
DTC No.	DTC Detecting Condition	Trouble Area
Always ON	There is a malfunction in the ECU internal circuit.	<ul style="list-style-type: none"> • Power source circuit • VSC TRAC warning light circuit • Skid control ECU

HINT:

If fail safe function is activated in VSC system, the "VSC OFF" indicator light lights up.

WIRING DIAGRAM



INSPECTION PROCEDURE

4	Check battery positive voltage.
----------	--

CHECK:

Check the battery positive voltage.

OK:

Voltage: 10 - 14 V

NG	Check and repair the charging system.
-----------	--

OK

5	Check operation of VSC TRAC warning light.
----------	---

In case of using the hand-held tester:

PREPARATION:

- (a) Connect the hand-held tester to DLC3.
- (b) Turn the ignition switch ON and push the hand-held tester main switch ON.
- (c) Select the ACTIVE TEST mode on the hand-held tester.

CHECK:

Check that "ON" and "OFF" of the VSC TRAC warning light can be shown on the combination meter on the hand-held tester.

In case of not using the hand-held tester:

PREPARATION:

- (a) Turn the ignition switch OFF.
- (b) Disconnect the connector from the skid control ECU.
- (c) Turn the ignition switch ON.

CHECK:

Check that the VSC TRC warning light goes off.

NG	Check and replace combination meter (See page BE-40).
-----------	--

OK

6	Check for short circuit in harness and connector between combination meter and skid control ECU, combination meter and DLC1 (See page IN-28).
---	--

NG

Repair or replace harness or connector.

OK

Check and replace skid control ECU